

# 1 bedroom apartments

TYPE A

# CANDLERIGGS

## ACCOMMODATION COMPRISES

- Entrance
- Open plan living and kitchen
- Master bedroom
- Separate bathroom

## APARTMENT SIZE

47.2 – 49.8 m<sup>2</sup>

## DEPOSIT

1.5 months rent

## COUNCIL TAX BAND

Band D

## EPC RATING

B

## TYPE OF TENANCY

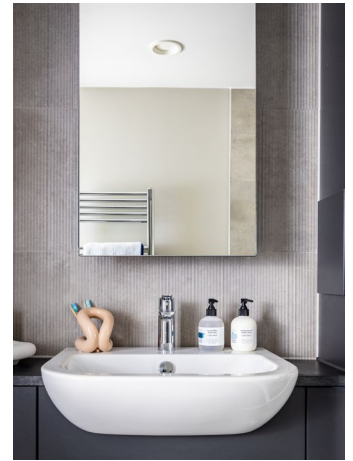
Private residential tenancy

## GOOD TO KNOW

- Tenants are responsible for the payment of utilities as well as council tax
- 100Mb superfast broadband is included in your rent
- All tenancy applications subject to referencing

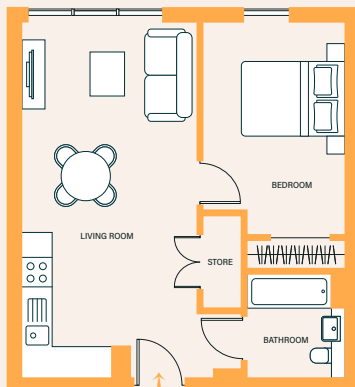


These images represent Apartment Type B. Please enquire for other types available.



## Floorplan

TYPE A

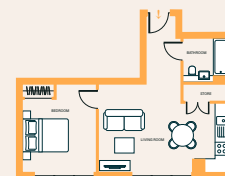


SIZE: 47.2 - 49.8 M<sup>2</sup>

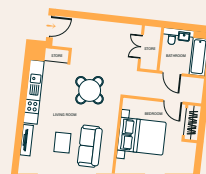


## OTHER FLOORPLANS AVAILABLE:

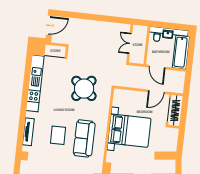
Other apartment types may be available, speak to our team to see all layouts  
Disclaimer: Please note floor plans are not drawn to scale



TYPE E  
SIZE: 47.5 M<sup>2</sup>



TYPE F  
SIZE: 53.4 M<sup>2</sup>



TYPE J  
SIZE: 60.5 - 60.7 M<sup>2</sup>

LARN2207001  
Landlord registration: 524518/260/04062

Want to book a viewing or need to find out more? Contact our team today on 0141 648 1196.

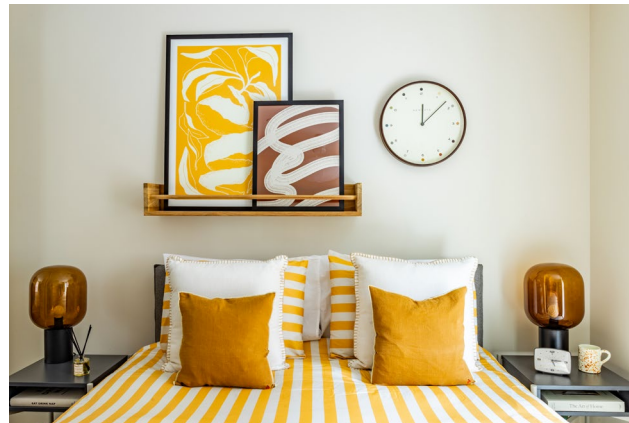
Homes for rent by  Legal & General



DINING TABLE & CHAIRS

## Furniture included

Our interior designers have curated a premium-quality furniture package including bespoke pieces all set up and ready for when you move in. Prefer to BYO? Nae bother. Speak to a member of our team to see if we have any unfurnished options still available.



KING-SIZED BED & BED SIDE TABLE



SOFA

### LIVING AREA

Our spacious living area comes all set with designer furniture, ready for you to get going from the very start. The bespoke furniture includes a sofa, coffee table, TV unit with storage, dining table, & dining chairs.

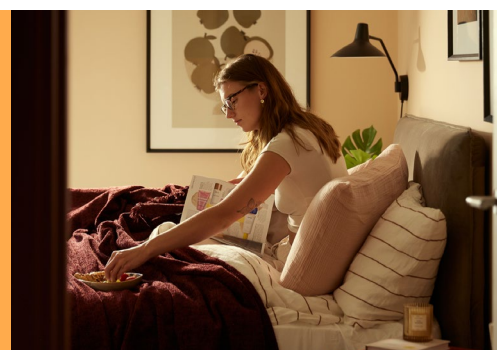
### BEDROOM

Enjoy your king size ottoman bed with gas-lift storage base and bespoke bedside tables. There's also plenty of storage in the form of built-in wardrobes with floor-to-ceiling mirrors on the door.

There's loads of great perks that come as standard with your apartment.

**24/7 on-site team**  
**Parcel store**  
**Secure tenancies**  
**Free broadband**  
**Designer furniture**  
**Resident events**  
**Free to decorate\***  
**Pet friendly\*\***

**Central  
location**



**Pets are  
welcome**

\*IMAGES ARE INDICATIVE ONLY

\*We offer flexibility to decorate your apartment – terms and conditions  
\*\*Some of our apartments are pet friendly – terms and conditions apply

Want to book a viewing or need to find out more? Contact our team today on 0141 648 1196.