

2 bedroom apartments

TYPE A

CANDLERIGGS

ACCOMMODATION COMPRISES

- Entrance
- Open plan living and kitchen
- Master bedroom with shower ensuite
- Second bedroom
- Separate bathroom

APARTMENT SIZE

67.1 – 67.5 m²

DEPOSIT

1.5 months rent

COUNCIL TAX BAND

Band E

GOOD TO KNOW

- Tenants are responsible for the payment of utilities as well as council tax
- 100Mb superfast broadband is included in your rent
- All tenancy applications subject to referencing

EPC RATING

B

TYPE OF TENANCY

Private residential tenancy

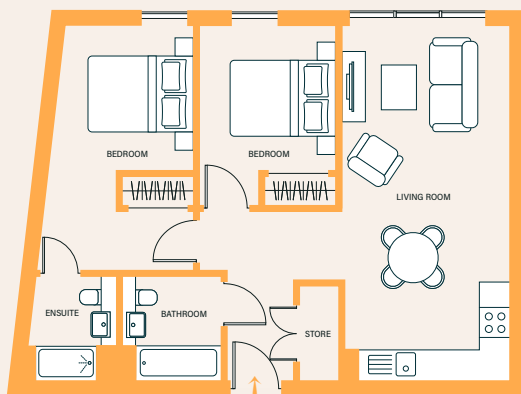


These images represent Apartment Type C. Please enquire for other types available.

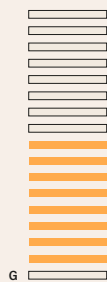


Floorplan

TYPE A



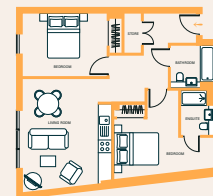
SIZE: 67.1 – 67.5 M²



1ST-8TH FLOOR

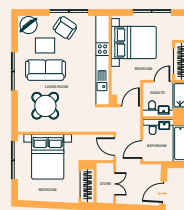
OTHER FLOORPLANS AVAILABLE:

Other apartment types may be available, speak to our team to see all layouts
Disclaimer: Please note floor plans are not drawn to scale



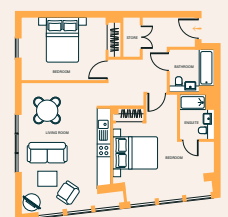
TYPE E

SIZE: 70.4 - 70.5 M²



TYPE F

SIZE: 67.5 - 67.6 M²



TYPE J

SIZE: 76 M²

LARN2207001
Landlord registration: 524518/260/04062

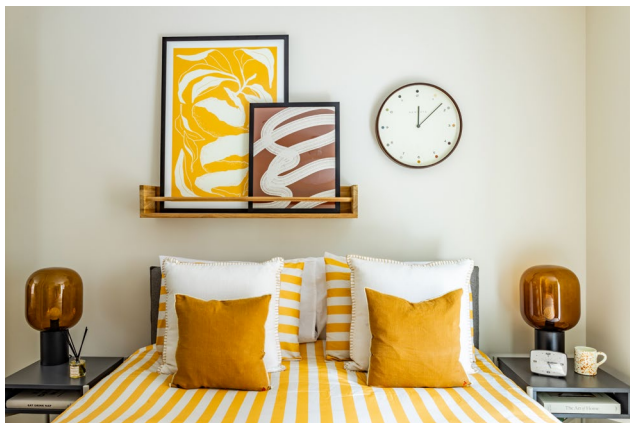
Want to book a viewing or need to find out more? Contact our team today on 0141 648 1196.



DINING TABLE & CHAIRS

Furniture included

Our interior designers have curated a premium-quality furniture package including bespoke pieces all set up and ready for when you move in. Prefer to BYO? Nae bother. Speak to a member of our team to see if we have any unfurnished options still available.



KING-SIZED BED & BED SIDE TABLE



SOFA

LIVING AREA

Our spacious living area comes all set with designer furniture, ready for you to get going from the very start. The bespoke furniture includes a sofa, coffee table, TV unit with storage, dining table, & dining chairs.

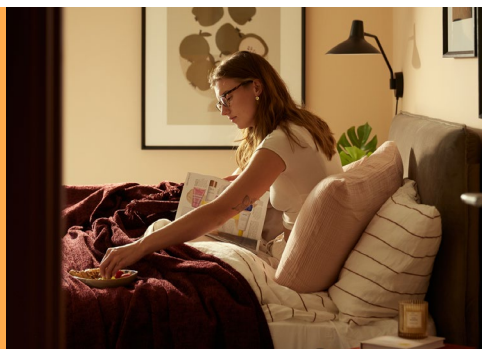
BEDROOM

Enjoy your king size ottoman bed with gas-lift storage base and bespoke bedside tables. There's also plenty of storage in the form of built-in wardrobes with floor-to-ceiling mirrors on the door.

There's loads of great perks that come as standard with your apartment.

24/7 on-site team
Parcel store
Secure tenancies
Free broadband
Designer furniture
Resident events
Free to decorate*
Pet friendly**

**Central
location**



**Pets are
welcome**

*IMAGES ARE INDICATIVE ONLY

*We offer flexibility to decorate your apartment – terms and conditions
**Some of our apartments are pet friendly – terms and conditions apply

Want to book a viewing or need to find out more? Contact our team today on 0141 648 1196.